

# Four-Way Traffic Light

Aadeesh Dhiman, Aaditya Dhiman,  
Matthew Fortman, Matthew Monroe

This circuit switches between day and night modes to provide traffic signals to an intersection. The daytime lights flash through red, yellow and green lights to signal when to stop, slow down and go. The nighttime lights have flashing yellows in two directions and flashing reds in the other two. This allows for safe and efficient travel in vehicles.

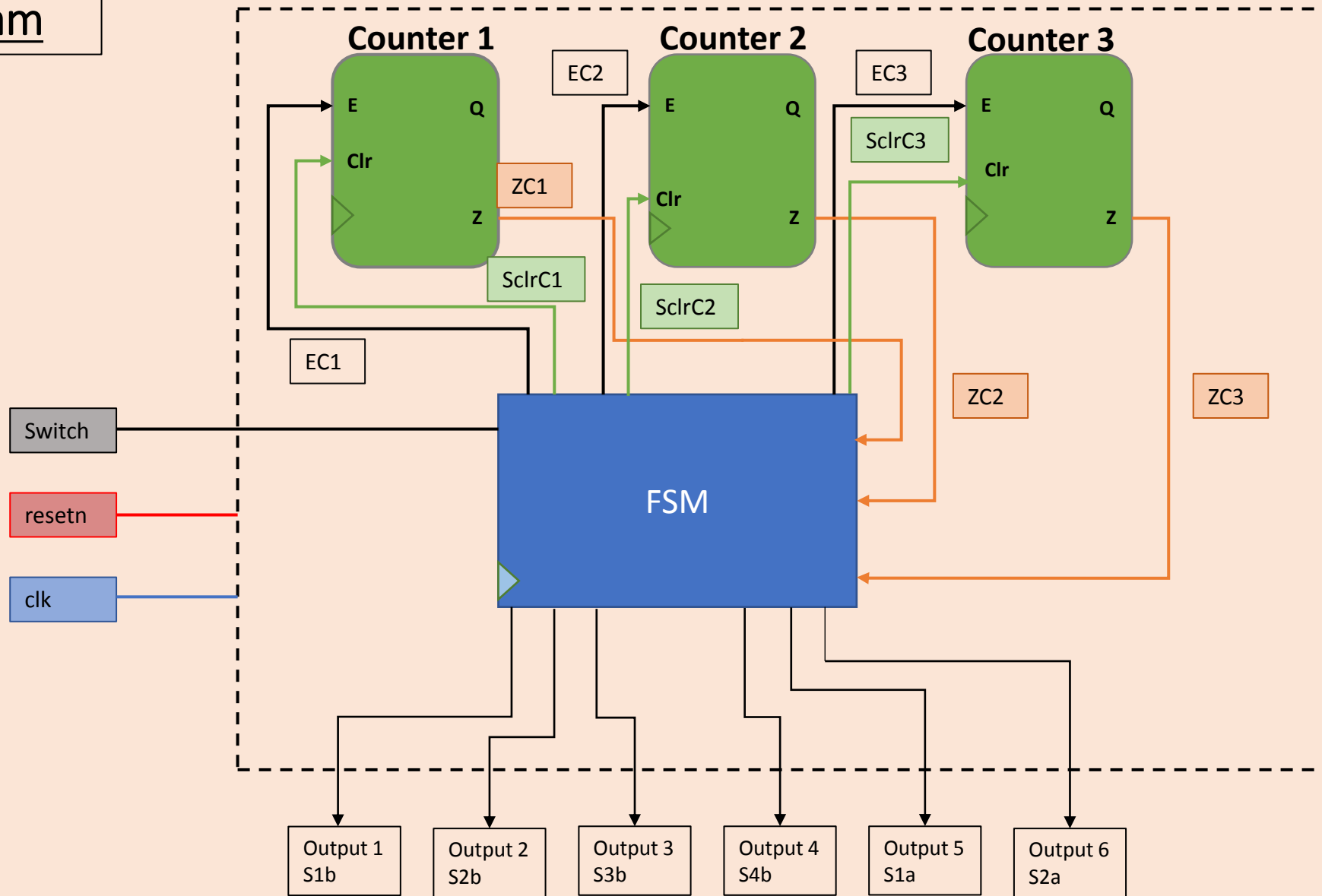


## Block Diagram

C1 = 10 sec

C2 = 2 sec

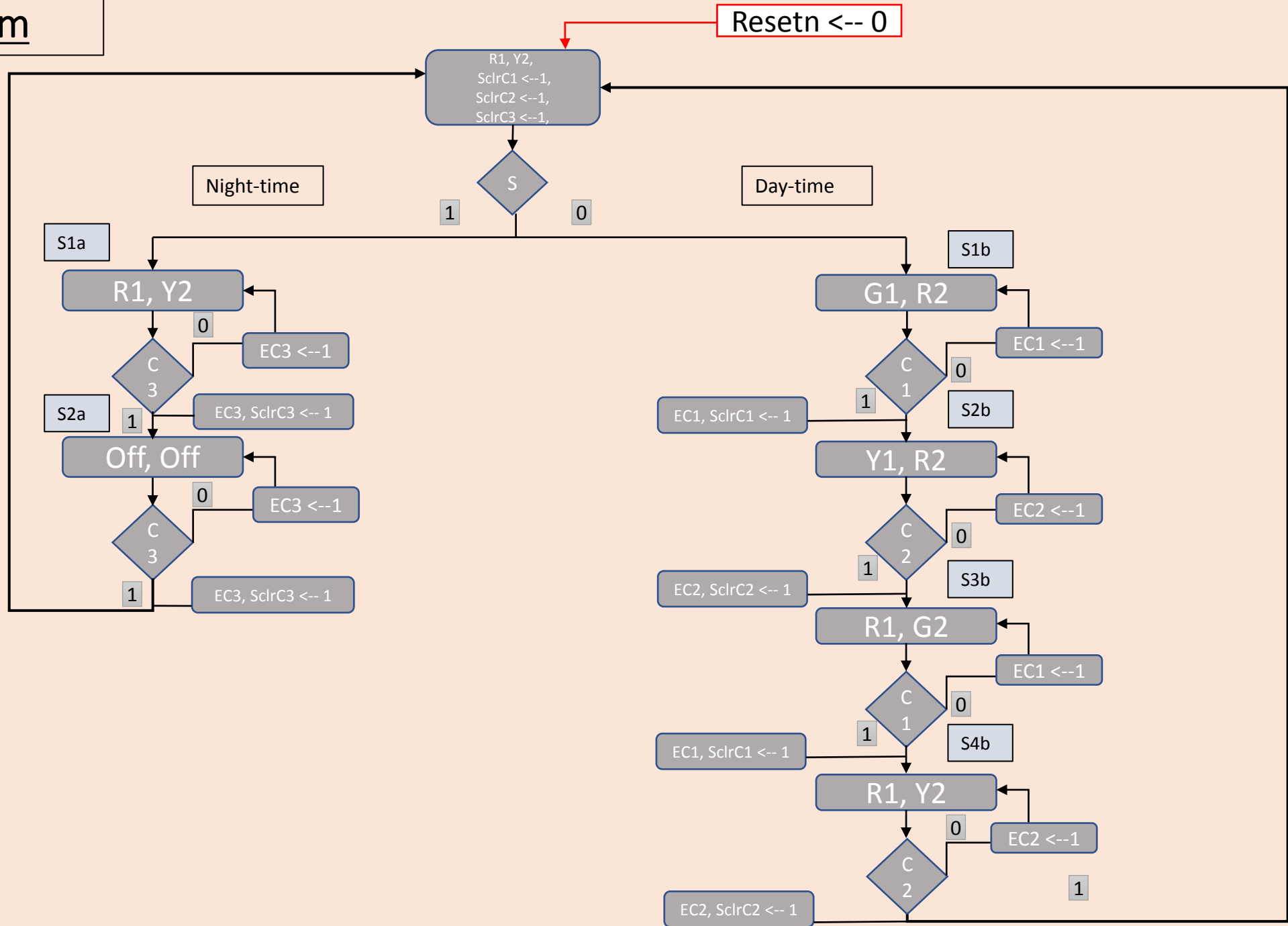
C3 = 0.5 sec



# State Diagram

Green(G) = 001  
Yellow(Y) = 010  
Red (R) = 100

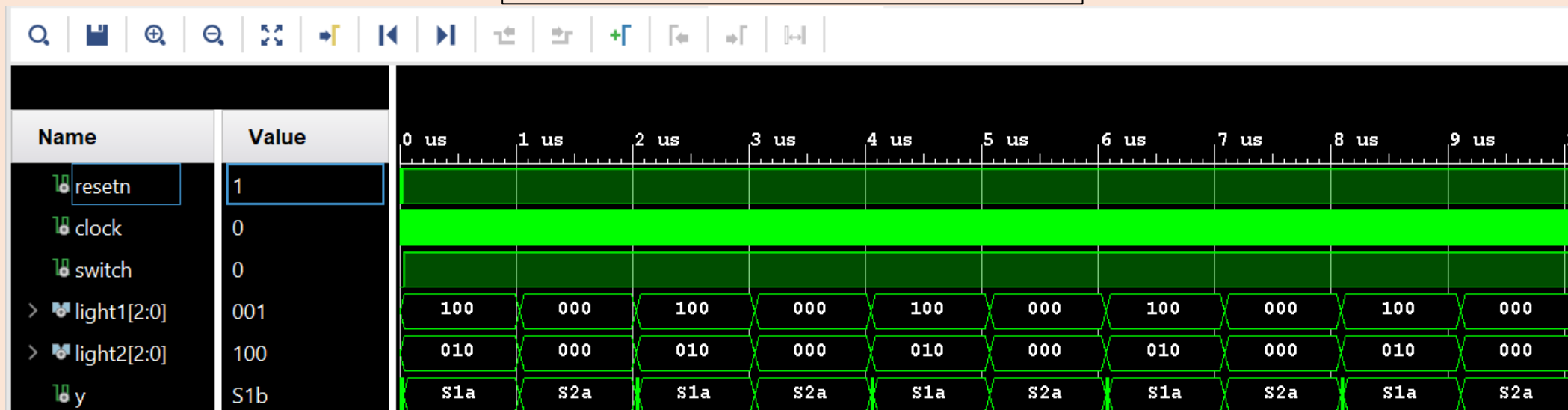
C1 = 10 sec  
C2 = 2 sec  
C3 = 0.5 sec



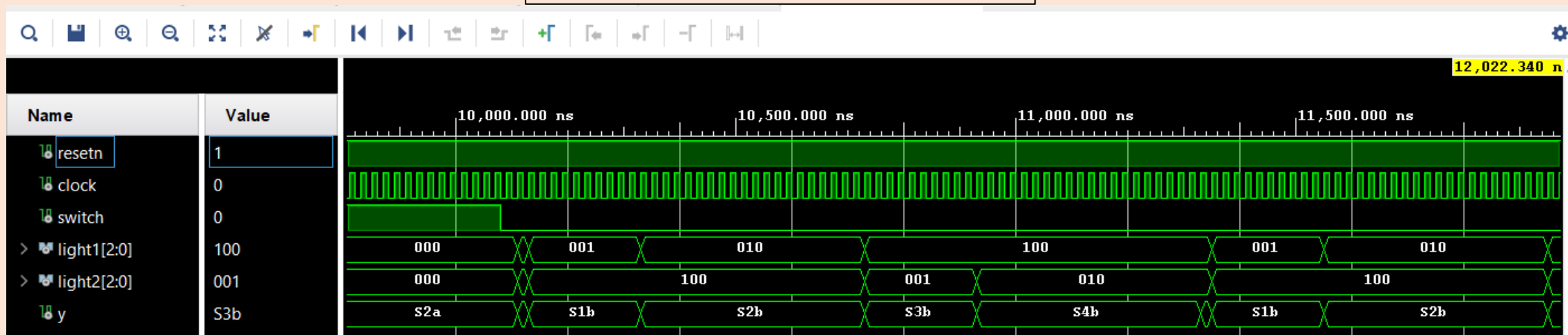
# Behavioral Simulation

## Nighttime Mode (switch =1)

Green = 001  
Yellow = 010  
Red = 100



## Daytime Mode (switch =0)



# Demo Video

